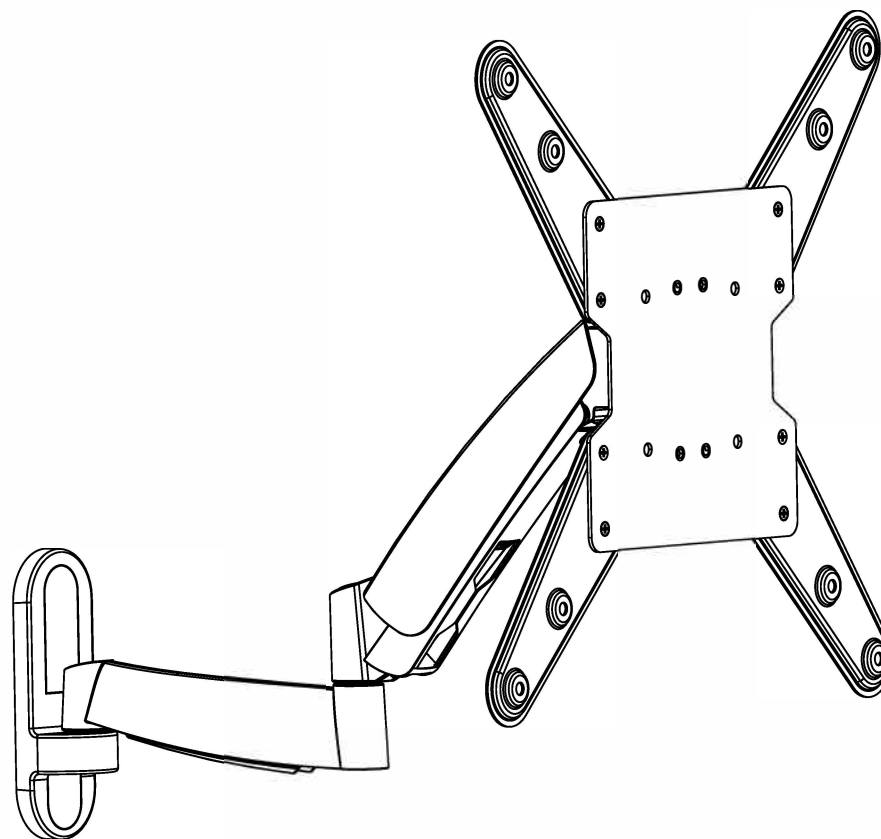


## Counterbalance Full Motion LCD Wall Mount

### Maintenance

- Check that the bracket is secure and safe to use at regular intervals(at least every three months).
- Please contact your distributor if you have any questions.



**CAUTION:** DO NOT EXCEED  
RATED LISTED WEIGHT. SERIOUS  
INJURY OR PROPERTY DAMAGE  
MAY OCCUR!

WM-TVM-13-47I-22



100x100/200x100  
200x200/400x200  
300x300/400x400



ISSUED: APR. 2014

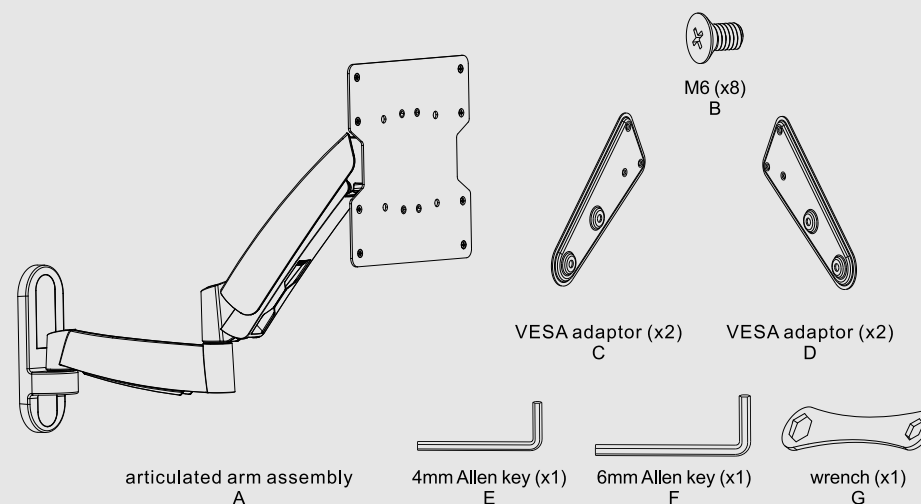
**NOTE:** Read the entire instruction manual before you start installation and assembly.

## ⚠ WARNING

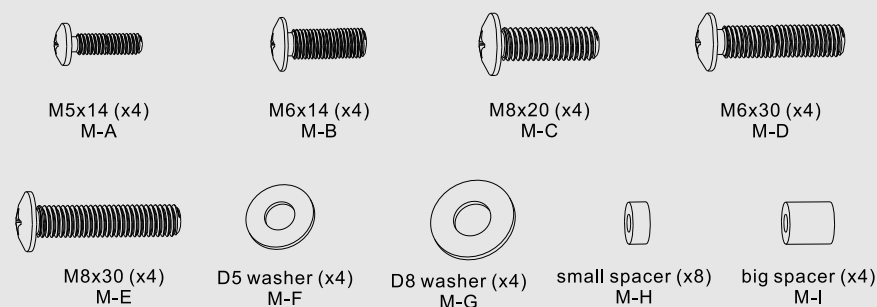
- Do not begin the installation until you have read and understood **all** the instructions and warnings contained in this installation sheet. If you have any questions regarding any of the instructions or warnings, please contact your local distributor.
- This mounting bracket was designed to be installed and utilised **ONLY** as specified in this manual. Improper installation of this product may cause damage or serious injury.
- This product should only be installed by someone with good mechanical ability who has basic building experience and fully understands this manual.
- Make sure that the supporting surface will safely support the combined weight of the equipment and **all** attached hardware and components.
- If mounting to wood wall studs, make sure that mounting screws are anchored into the center of the studs. The use of a stud finder is highly recommended.
- Always use an assistant or mechanical lifting equipment to safely lift and position the equipment.
- Tighten screws firmly, but do not over tighten. Over tightening can cause damage to the items, This greatly reduces their holding power.
- This product is intended for indoor use only. Using this product outdoors could lead to product failure and personal injury.

## Component Checklist

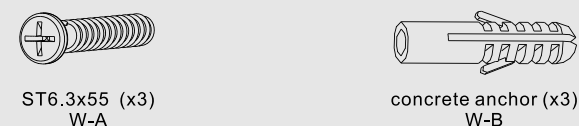
**IMPORTANT:** Ensure that you have received all parts according to the component checklist prior to installation. If any parts are missing or faulty, telephone your local distributor for a replacement.



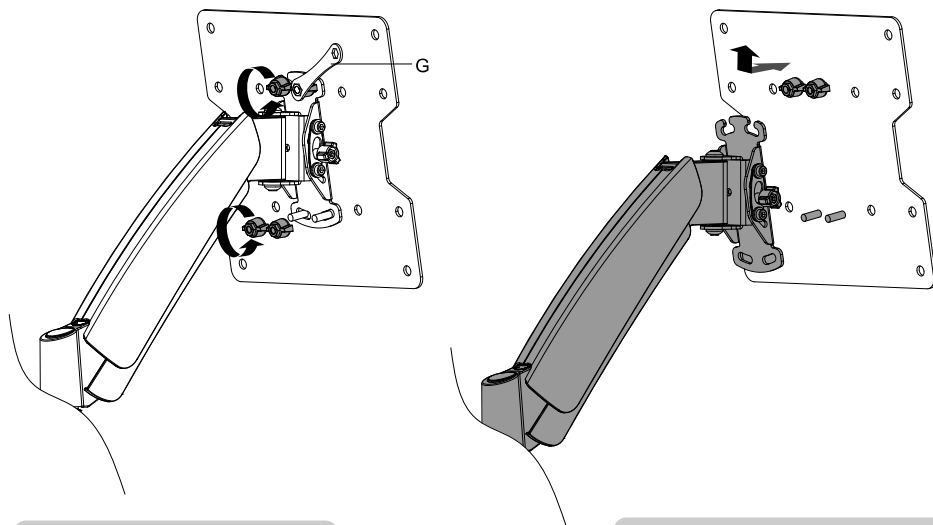
### Package M



### Package W



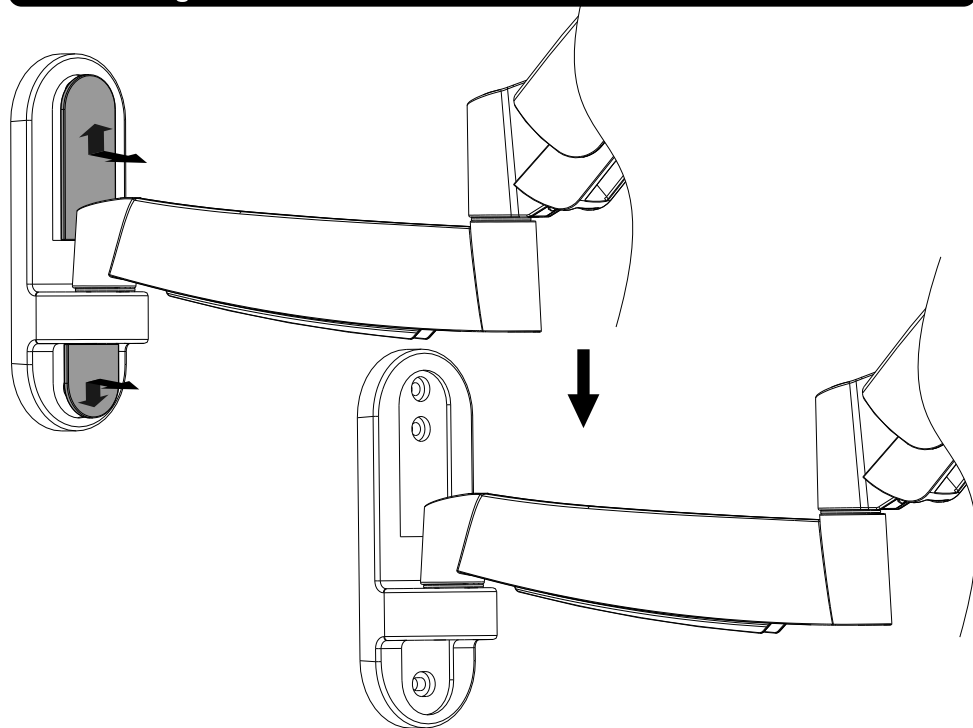
## 1. Separating the VESA Plate from the Wall Mount



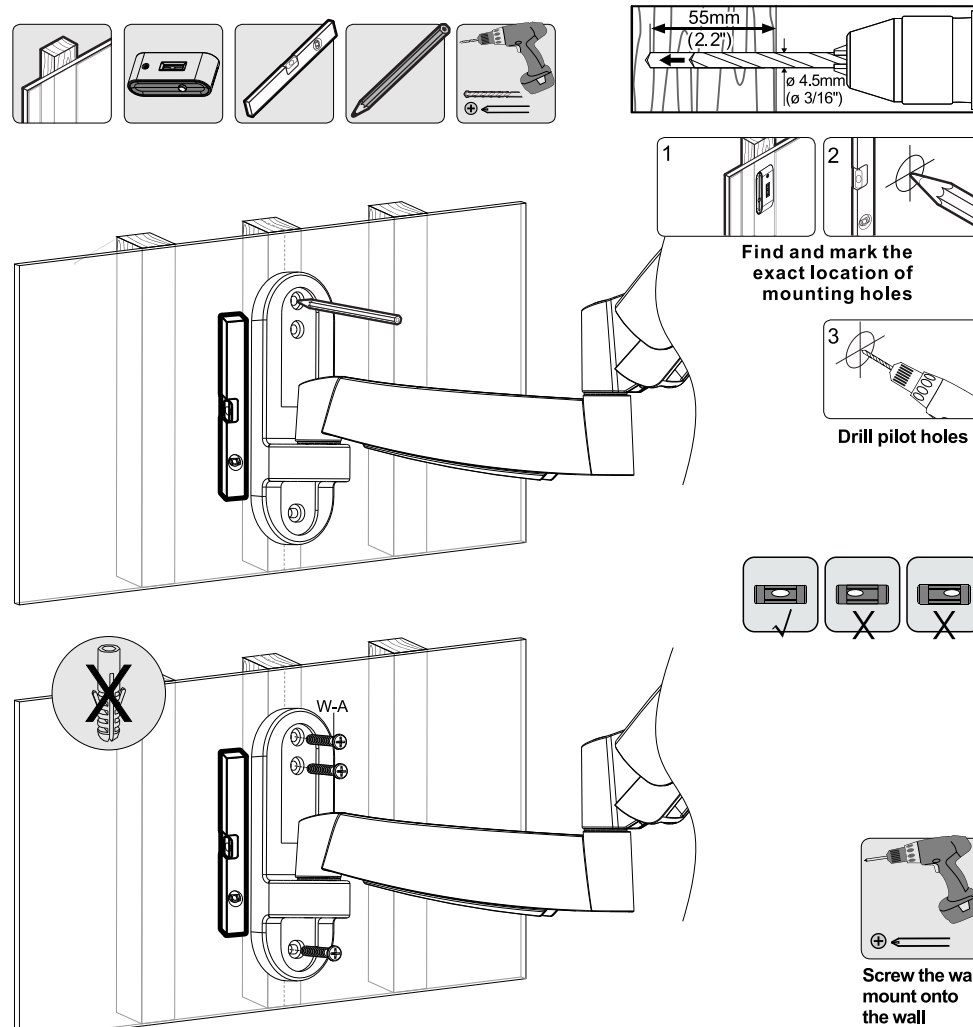
- Loosen the upper knobs.
- Then remove the lower knobs.

Remove the VESA plate.

## 2. Removing the Decorative Covers

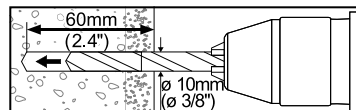
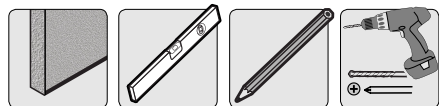


## 3a. For Wood Stud Wall Mounting

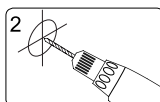


- Make sure that mounting screws are anchored into the center of the studs. The use of a stud finder is highly recommended.
- Installers are responsible to provide hardware for other types of mounting situations.
- Installers must verify that the supporting surface will safely support the combined weight of the equipment and all attached hardware and components.

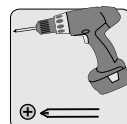
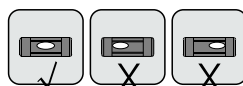
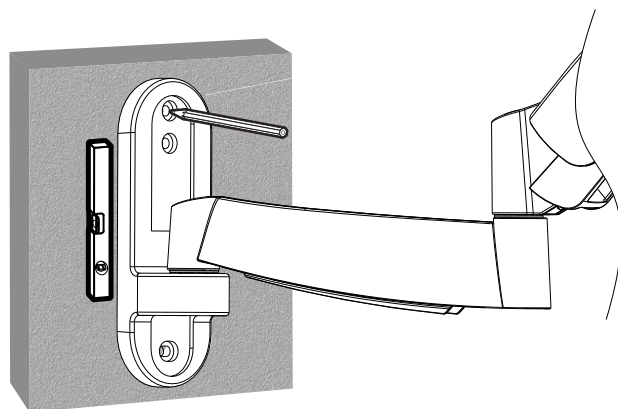
### 3b. For Solid Brick and Concrete Mounting



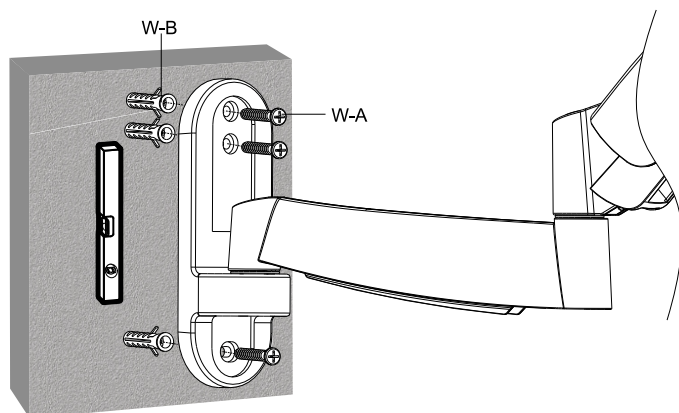
1  
Mark the exact  
location of  
mounting holes



2  
Drill pilot holes



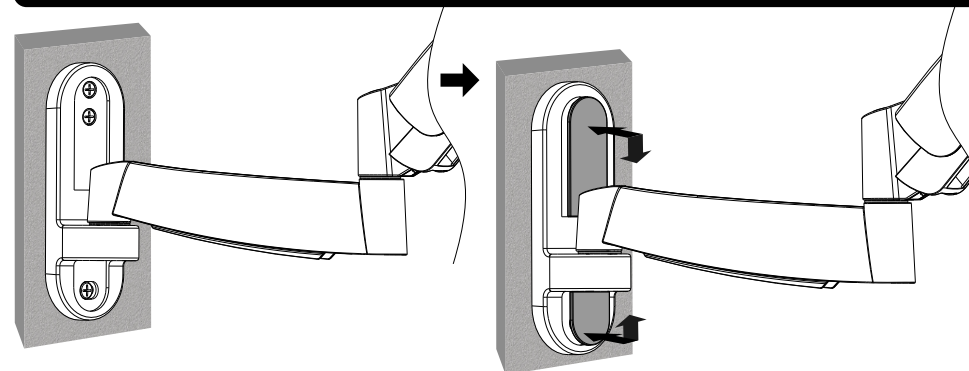
Screw the wall  
mount onto  
the wall



## ⚠ WARNING

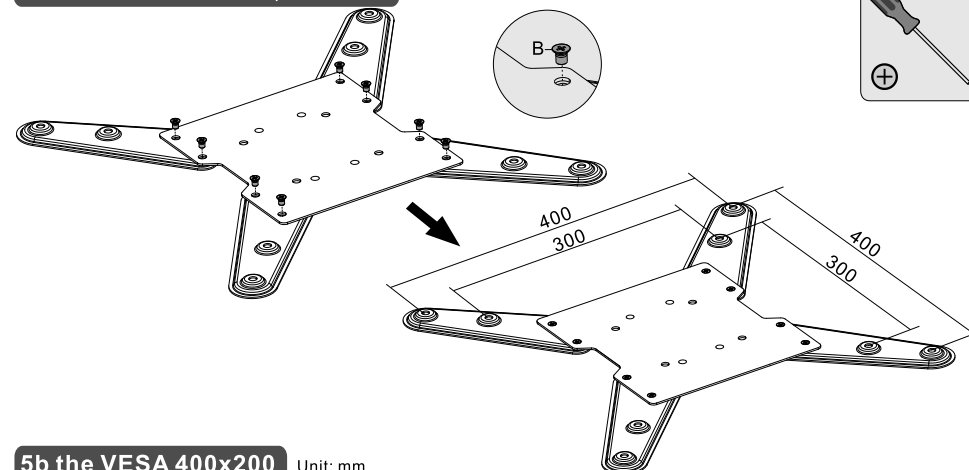
Installers must verify that the supporting surface will safely support the combined weight of the equipment and all attached hardware and components.

### 4. Installing the Decorative Covers

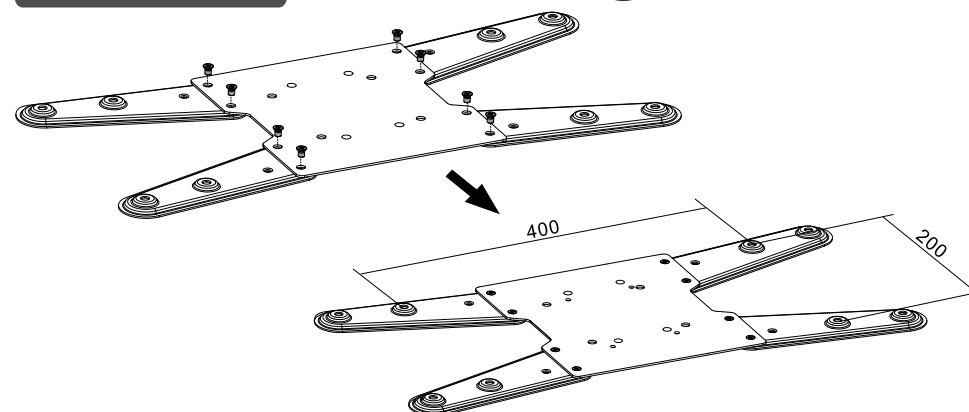


### 5. Assembling the VESA Adaptors

5a the VESA 300x300, 400X400 Unit: mm

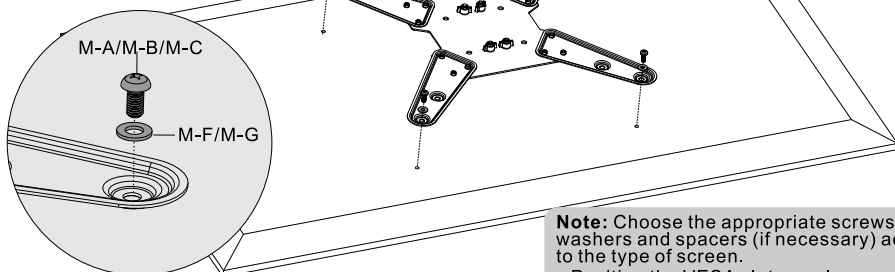
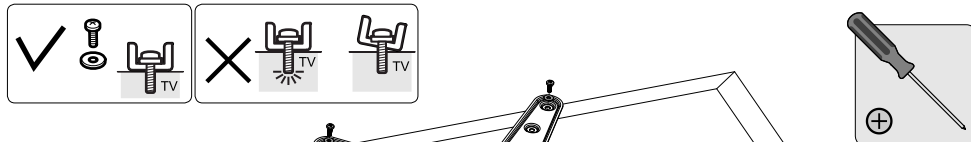


5b the VESA 400x200 Unit: mm



## 6. Installing the VESA Plate

### 6-1 For Flat Back Screens

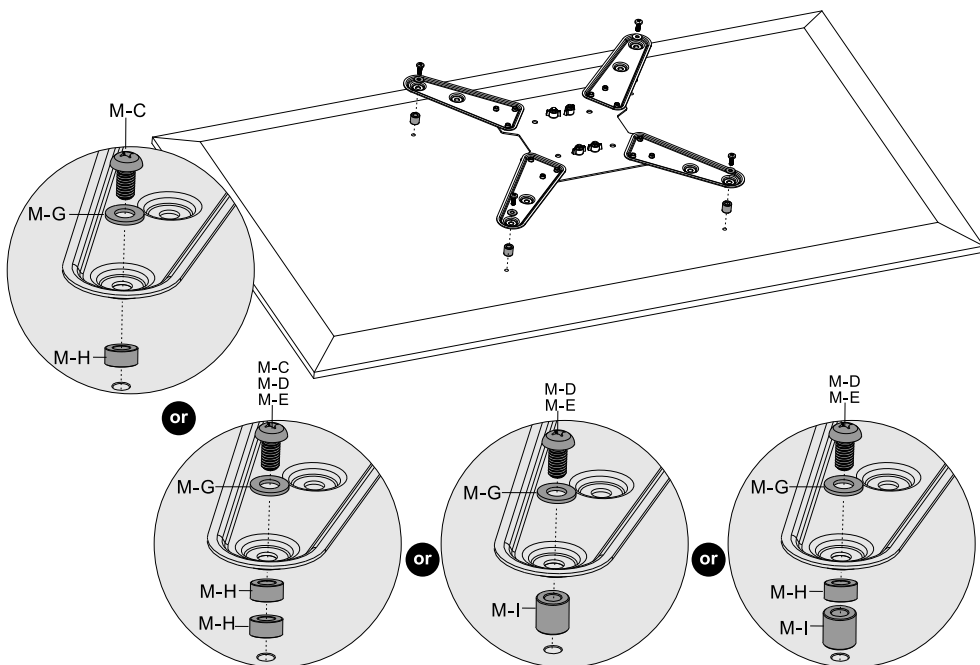
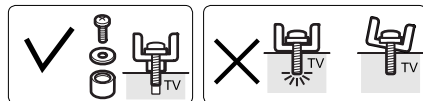


**Note:** Choose the appropriate screws, washers and spacers (if necessary) according to the type of screen.

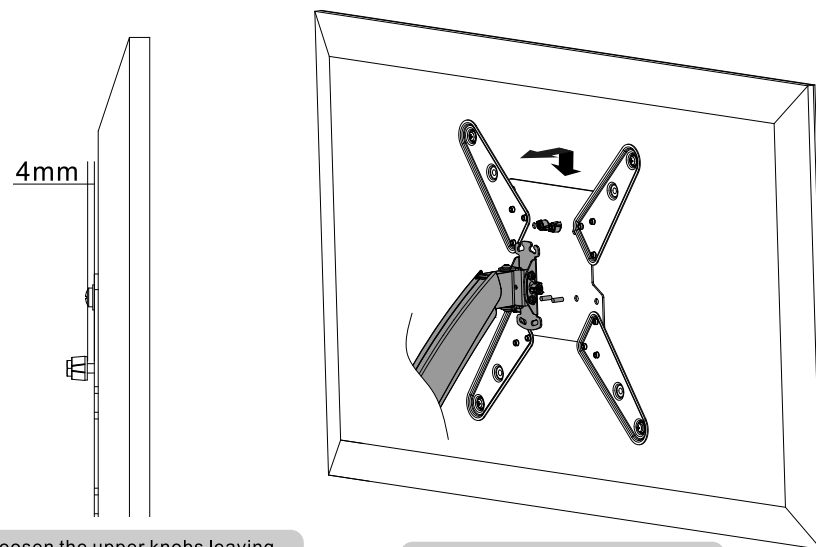
- Position the VESA plate as close as possible to the center of the TV.
- Screw the VESA plate onto the TV.

**⚠ Tighten all screws but do not over tighten.**

### 6-2 For Recessed Back Screens

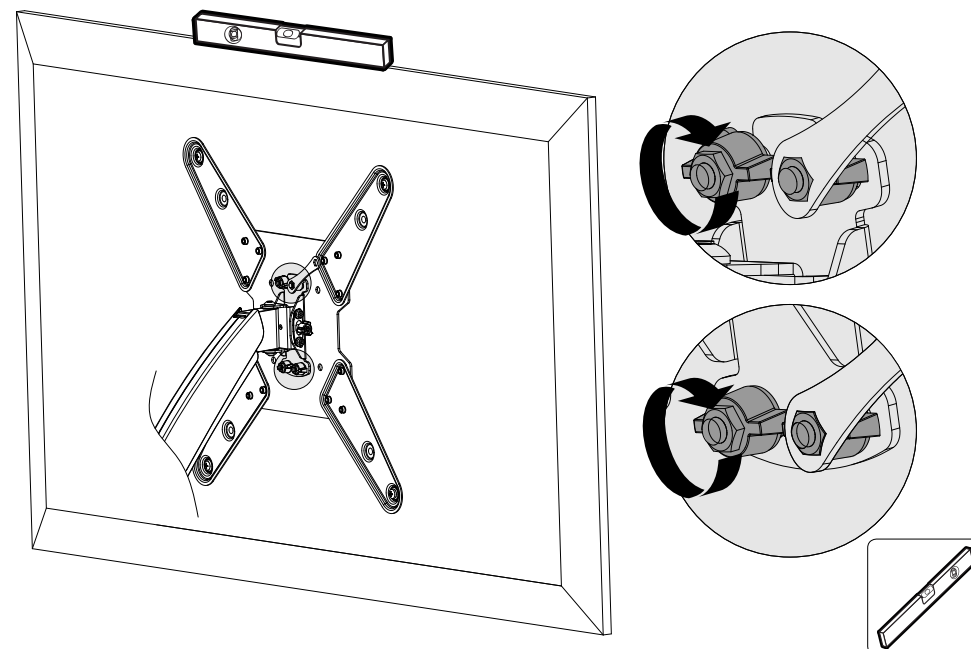


## 7. Hooking the TV onto the Wall Mount



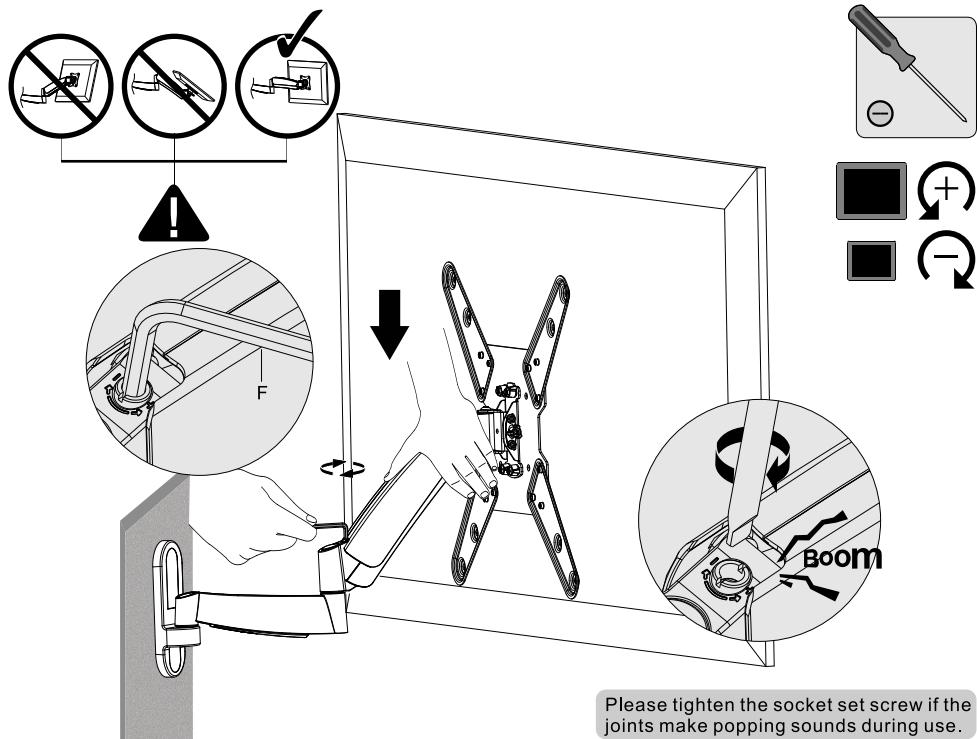
Loosen the upper knobs leaving a 4mm space to the VESA plate.

Hooking the TV onto the wall mount



- Level the TV.
- Place the lower knobs and tighten all knobs.

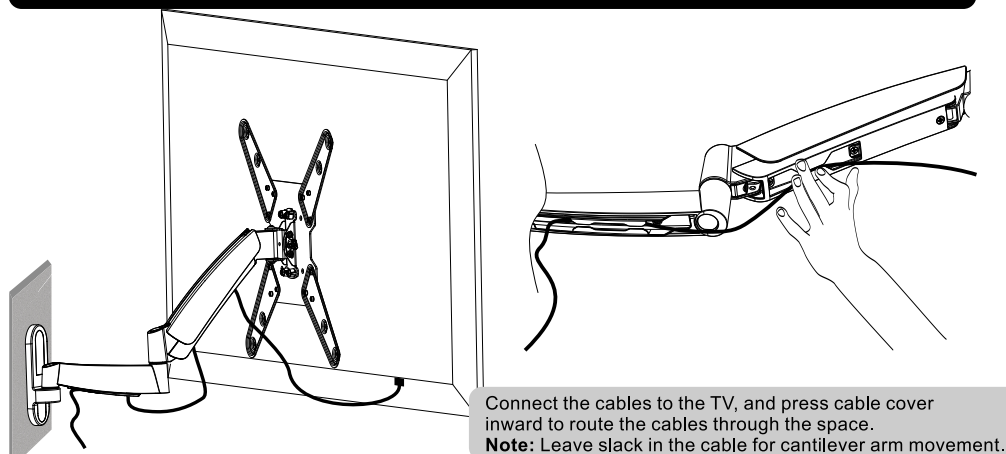
## 8. Tension Adjust



Please keep the arm level during tension adjustment. Use a proper Allen key to slightly loosen or tighten the adjustment screw according to the TV weight.

If TV settles on its own, rotate adjustment screw towards the "+" symbol.  
If TV rises on its own, rotate adjustment screw towards the "-" symbol.

## 9. Cable Management



## 10. Adjustment

